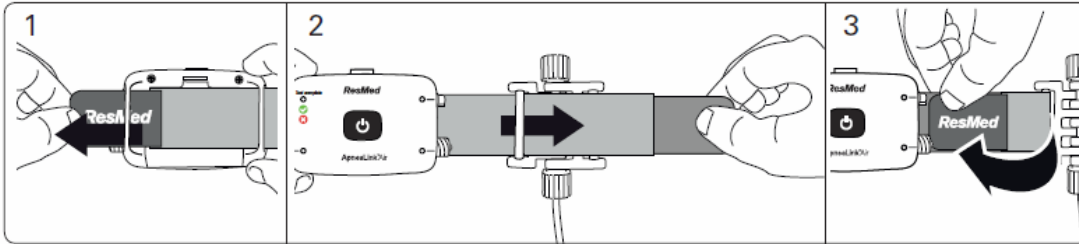
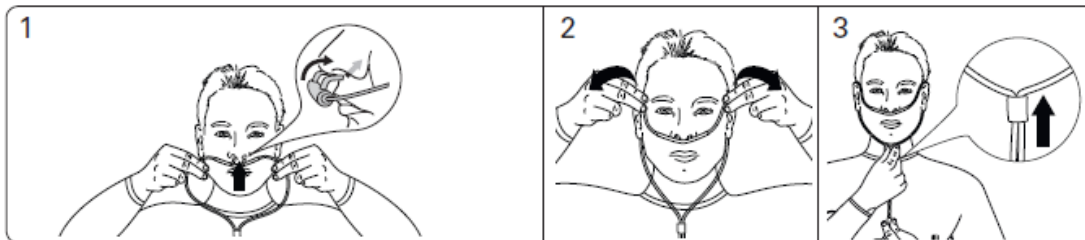


FITTING THE RESPIRATORY BELT



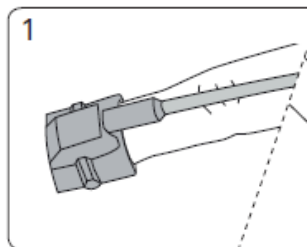
1. Pull the belt around the body. Thread the end of the belt through the slot on the effort sensor and fasten the tab to the belt.
2. Check that the belt is secure and comfortable and that the device is positioned over the center of the chest.
3. If using a pulse oximeter, slide the clip onto the belt.

FITTING THE CANNULA



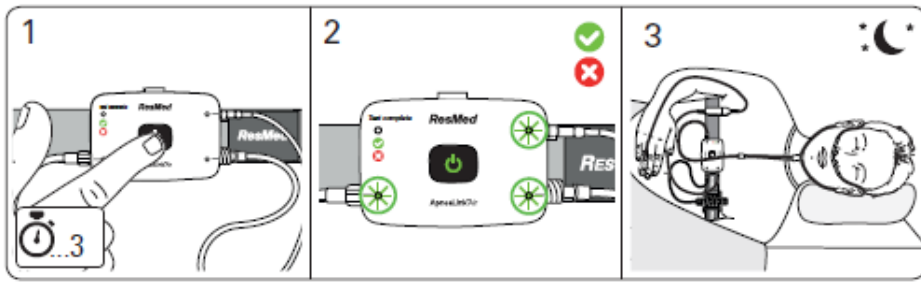
1. Insert the prongs into the nostrils. Make sure the curved side is pointing towards the back of the nose.
2. Loop the tubing around the ears.
3. Pull the slider up towards the chin until the plastic tubing is secure and comfortable.

FITTING THE SENSOR



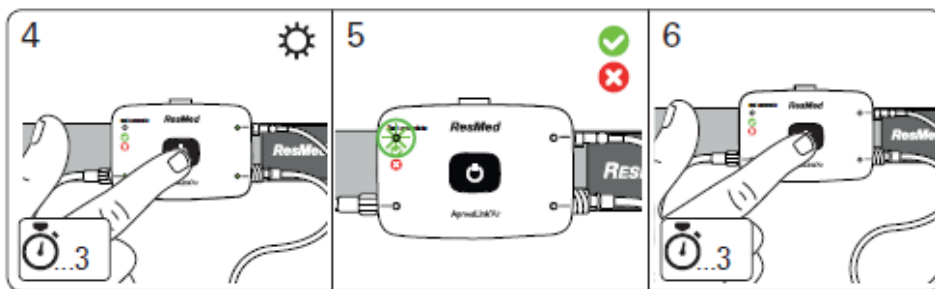
1. Slip the sensor over the index/pointer finger.

STARTING THE TEST



1. Press and hold the power button in the center of the device for about 3 seconds or until the light turns on.
2. Check that the lights next to the accessories are green. If any are red and blinking, the accessories are not attached correctly.
3. Go to sleep as normal.

STOPPING THE TEST



1. Press and hold the power button for about 3 seconds.
2. Check that the test complete indicator is lit and green.
3. Press and hold the power button for about 3 seconds to turn off the device.